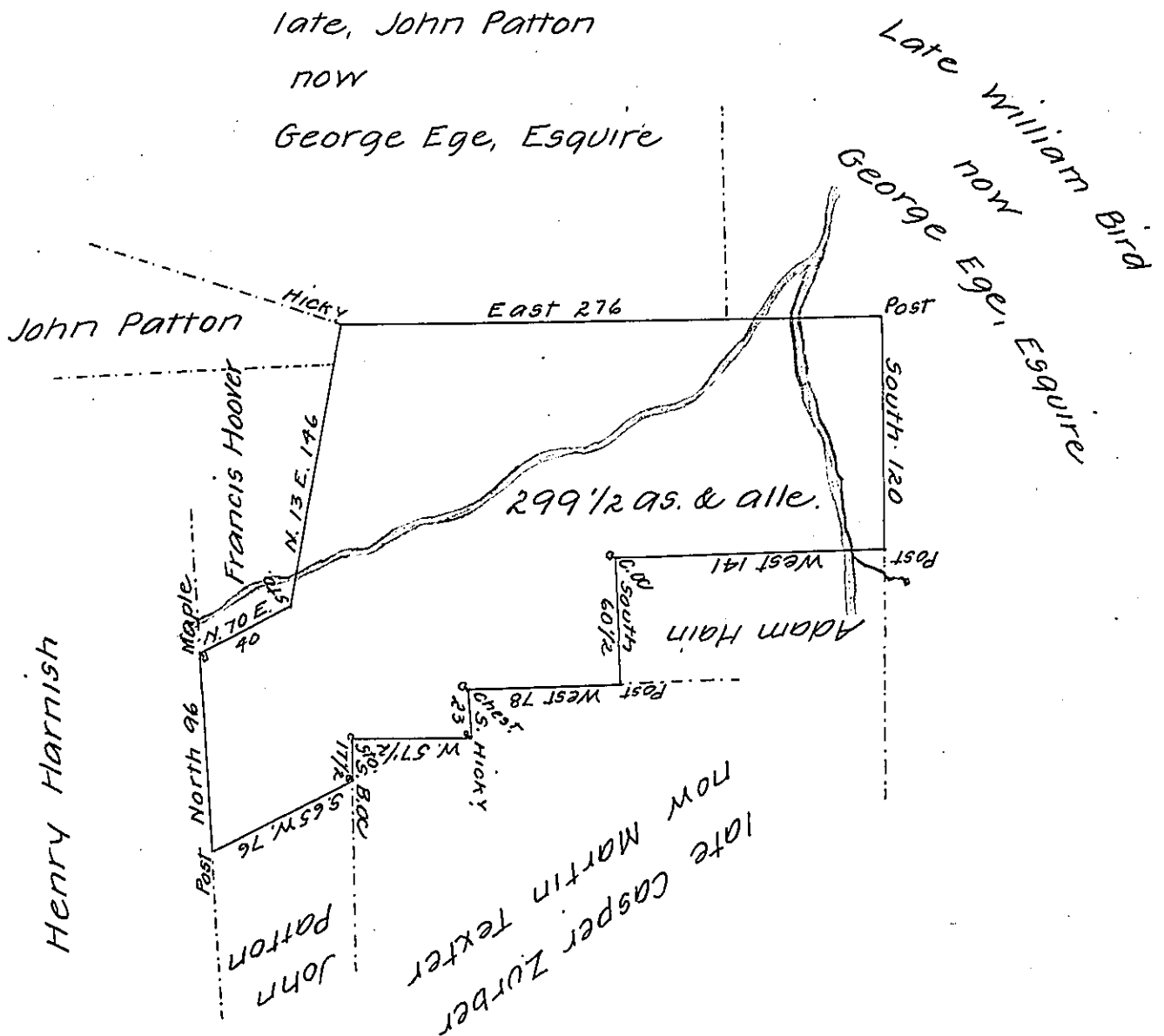


FORM NO. 1.



By virtue of a Warrant granted to Benjamin Wallace dated the 20th. of August 1814 there was surveyed on the 28th. day of May A.D. 1819 (by Henry M. Richards for John V. Epler then Deputy Surveyor) unto George Ege, Esquire, in right of the said Benjamin Wallace the above described tract of land situate in Heidelberg township Berks County containing two hundred and ninety nine and a half acres and the allowance of six per cent &c.

H. M. Richards D.S.

Nov. 25. 1822

To Saml. Cochran Esqr. }  
 Surveyor General }

IN TESTIMONY that the above is a copy of the original remaining on file in the Department of Internal Affairs of Pennsylvania, made conformably to an Act of Assembly approved the 16th day of February 1833, I have hereunto set my hand and caused the Seal of said Department to be affixed at Harrisburg, this twenty-third day of May 1907

*Henry Hoover*  
 Secretary of Internal Affairs.